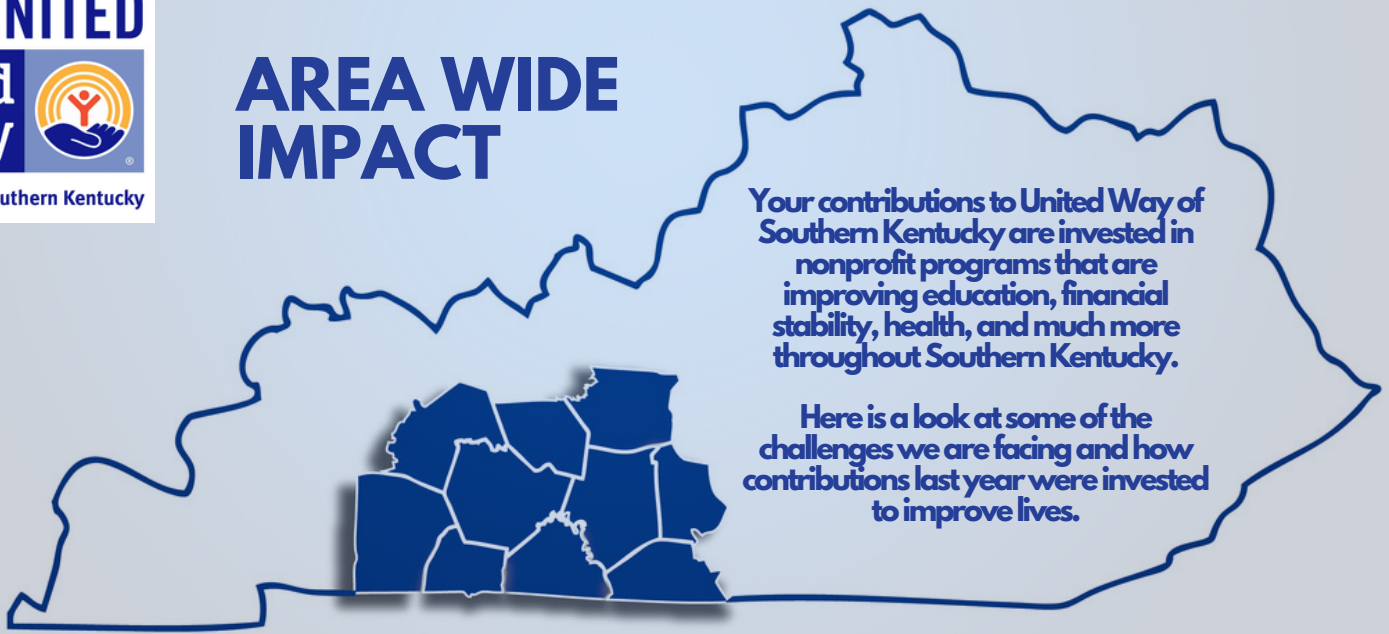


AREA WIDE IMPACT



Your contributions to United Way of Southern Kentucky are invested in nonprofit programs that are improving education, financial stability, health, and much more throughout Southern Kentucky.

Here is a look at some of the challenges we are facing and how contributions last year were invested to improve lives.

The Challenges In Our Community



1 IN 8
 people in Kentucky are facing hunger



22 %
 of Kentucky children live in poverty



Over Half
 of children in Kentucky live in a low-income family with a high housing cost burden



NEARLY 55 %
 of children in our area are not ready for kindergarten



60 %
 of 3- and 4-year-olds in Kentucky were not enrolled in informal early learning programs

What We Are Doing About It

DOLLARS INVESTED INTO NONPROFIT PROGRAMING THIS YEAR



Education
\$533,670



Health
\$274,463



INCOME
\$36,000



SAFETY NET
\$187,767

LOCAL IMPACT THIS YEAR



3,025
 Hours Spent Helping Others
 *Area Wide



99,965
 Books Mailed to Children Free of Charge



8,843
 Contacts Answered
44,250
 Minutes Helping Contacts



61,879
 Nonperishable Items Collected For Those in Need

Thank you for Choosing to
LIVE UNITED®
When you give, advocate, or volunteer, you change lives!

TO CONTACT US:



270-843-3205



1110 COLLEGE STREET,
 BOWLING GREEN, KY 42101



WWW.UWSK.ORG



CONNECT WITH US ON SOCIAL MEDIA