

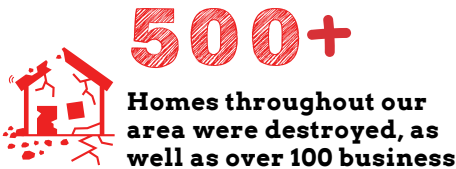
AREA WIDE IMPACT



YOUR CONTRIBUTIONS TO UNITED WAY OF SOUTHERN KENTUCKY ARE INVESTED IN NONPROFIT PROGRAMS THAT ARE IMPROVING EDUCATION, FINANCIAL STABILITY, HEALTH, AND MUCH MORE THROUGHOUT SOUTHERN KENTUCKY.

HERE IS A LOOK AT SOME OF THE CHALLENGES WE ARE FACING AND HOW CONTRIBUTIONS LAST YEAR WERE INVESTED TO IMPROVE LIVES.

The Challenges In Our Community



What We Are Doing About It

DOLLARS INVESTED INTO NONPROFIT PROGRAMING THIS YEAR

Education	Health	INCOME	SAFETY NET
\$498,270	\$260,138	\$29,600	\$276,807

LOCAL IMPACT THIS YEAR

Day of Caring	Dolly Parton's IMAGINATION LIBRARY	2-1-1 Get Connected. Get Help.™	FEED THE NEED.
325 Individuals Volunteered	90,384 Books Mailed to Children Free of Charge	8,449 Calls Answered	55,000+ Nonperishable Items Collected For Those in Need
2,600 Hours Spent Helping Others		39,497 Minutes Helping Callers	

THANK YOU FOR CHOOSING TO

LIVE UNITED®

When you give, advocate, or volunteer, you change lives!

TO CONTACT US:



270-843-3205



1110 COLLEGE STREET,  
BOWLING GREEN, KY 42101



WWW.UWSK.ORG



CONNECT WITH US ON SOCIAL MEDIA