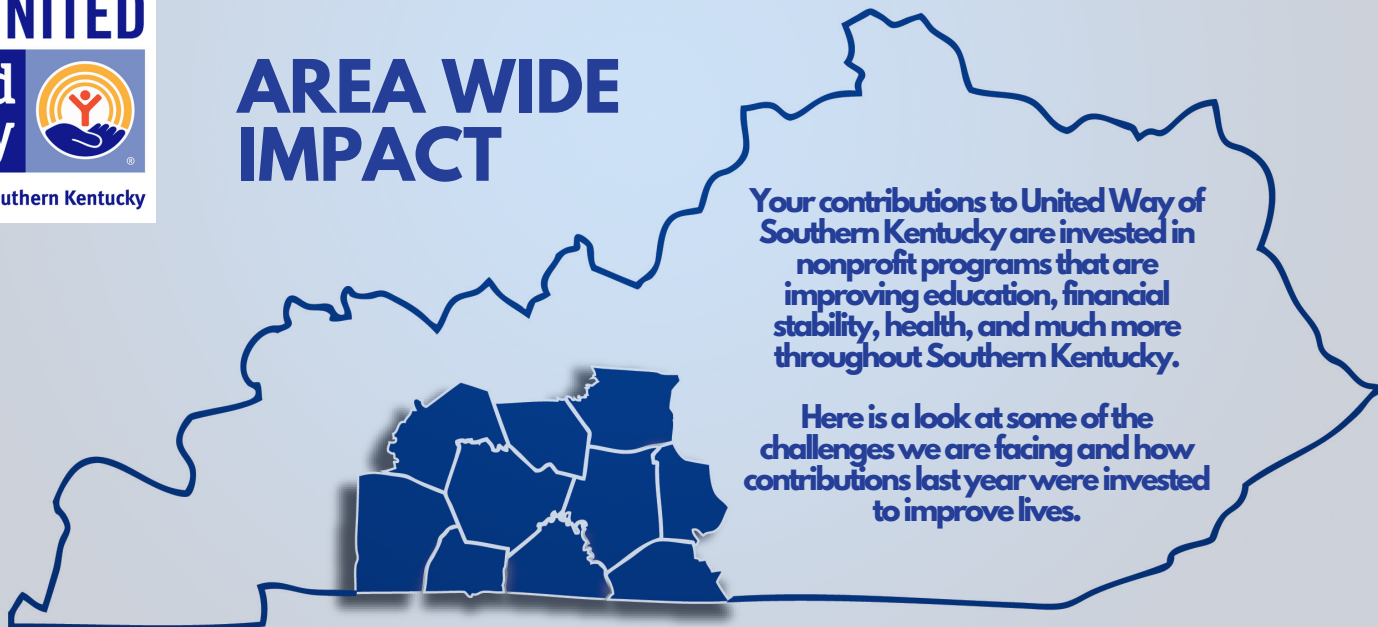


# AREA WIDE IMPACT



## The Challenges In Our Community



Is the estimated percent of children who are unprepared for Kindergarten in our area.



6,000+

Is the number Kentucky Preschool enrollment dropped by last year.



100+

Childcare centers throughout Kentucky have closed, many to never re-open.



37<sup>th</sup>

Kentucky's ranking in the nation in overall child well being.



28 %

Is the percent of households where children were not eating enough because food was unaffordable in Kentucky.



## What We Are Doing About It

### DOLLARS INVESTED INTO NONPROFIT PROGRAMING THIS YEAR



**Education**

**\$493,802**



**Health**

**\$264,540**



**INCOME**

**\$37,840**



**SAFETY NET**

**\$209,871**

### LOCAL IMPACT THIS YEAR



**750+**

Individuals Volunteered

**4,500**

Hours Spent Helping Others



**77,720**

Books Mailed to Children Free of Charge

**2-1-1**

Get Connected. Get Help.™

**7,640**

Calls Answered

**77,720**

Minutes

Helping Callers



**61,136**

Nonperishable Items Collected For Those in Need

**Thank you  
for  
Choosing to**

**LIVE UNITED®**

**When you  
give,  
advocate, or  
volunteer, you  
change lives!**

### TO CONTACT US:



270-843-3205



1110 COLLEGE STREET,  
BOWLING GREEN, KY 42101



WWW.UWSK.ORG



CONNECT WITH US ON SOCIAL MEDIA